

V Series

Rectifier Modules

Overview

Eltek V-Series rectifier modules provide unprecedented power density and in a truly compact, plug-and-play format. With a wide range of available voltages, power ratings, and system form factors, Eltek's power modules allow optimal system design and cost-effective deployment from initial install to future upgrades.



V SERIES

RECTIFIER MODULES

Doc 2052369 Issue 7

APPLICATIONS

- Cabinet power systems
- Enterprise networking equipment
- Embedded power systems
- Carrier networks



THE ELTEK DIFFERENCE

Small size, big power

At only 2RU, Eltek V-Series rectifiers can provide up to 2,500 Watts of power per unit. The small rectifier size allows for the use of smaller DC systems, freeing up space for additional electronics.

Industry-leading-efficiency

With up to 96% efficiency, the V-Series HE rectifiers not only reduce energy waste and costs, but since they generate less heat it also takes less energy to cool the equipment, thus reducing expenses in multiple areas of the operator's network.

Flexibility

V-Series rectifiers are designed to operate in Eltek's Compact and Integrated DC Power Systems. Utilize V-Series rectifiers for 92% conversion efficiency. Upgrade to V-Series HE rectifiers for up to 96% efficiency.

KEY FEATURES

- AVERAGE 96% EFFICIENCY (V-SERIES "HE" MODELS)
- V-SERIES HIGH-EFFICIENCY (HE) RECTIFIERS ARE ENERGY STAR QUALIFIED PRODUCTS
- ONLY 2RU IN HEIGHT
- OPERATES AT FULL POWER IN TEMPERATURES UP TO +65°C
- NEBS LEVEL 3



V SERIES RECTIFIERS

INPUT SPECIFICATIONS

AC Voltage	<ul style="list-style-type: none"> Universal AC: 100 to 240VAC (up to 1250 watt) High Line AC Only: 200 to 240VAC (1500 watt and above)
Other	<ul style="list-style-type: none"> Power Factor: >.98 for loads above 60% full load THD: Line Harmonics meet EN61000-3-2

OUTPUT SPECIFICATIONS

Noise	25mV RMS, 10 kHz -20 MHz bandwidth
Regulation	+/- 1% over line, load, and temperature
Efficiency	92% for V-Series rectifiers
	Up to 96% efficiency for V-Series HE rectifiers

TEMPERATURE RANGE

Storage	-40°C to +70°C
Operating	See table below for operating range, -40 to 65°C

STANDARD ALARM AND CONTROL INTERFACES

- Opto-isolated alarms: AC fail, DC fail, and thermal alarm
- Opto-isolated output disable command
- I2C addressable serial interface

PHYSICAL SPECIFICATIONS

Dimensions	<ul style="list-style-type: none"> Height: 87.6mm (3.45")(includes faceplate) Width: 86.7mm (3.41")(includes faceplate) Depth: 282.9mm (11.14")
Weight	3.2kg (7lbs)

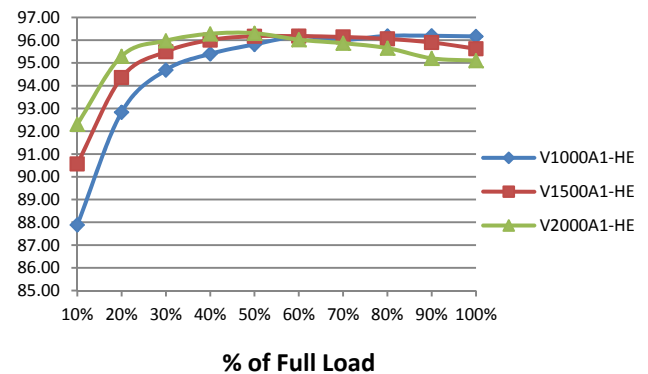
PROTECTION

Redundancy	Internal OR-ing protection
ESD	EN61000-4-2
AC surge	EN61000-4-5

AGENCY CERTIFICATIONS

- NEBS Level 3
- CISPR class B
- UL60950-1
- EN60950-1
- GR-3108 Class 2

EFFICIENCY



RECTIFIER MODULES

V Series Rectifiers	Nominal DC Output Voltage	Rated DC Output Current	AC Input Voltage Range	Max. Efficiency	Airflow	Operating Temperature
V0500A-VC	48V	10A	Universal	92%	Vertical	-40 to +65°C
V0750A-VC	48V	15A	Universal	92%	Vertical	-40 to +65°C
V1000A-VC	48V	20A	Universal	92%	Vertical	-40 to +65°C
V1250A-VC	48V	25A	Universal	92%	Vertical	-40 to +65°C
V1500A-VC	48V	30A	High Line	92%	Vertical	-40 to +65°C
V2000A-VC	48V	40A	High Line	92%	Vertical	-40 to +65°C
V2500A-VC	48V	50A	High Line	92%	Vertical	-40 to +65°C
V1500B-VC	24V	30A	High Line	92%	Vertical	-40 to +65°C
V1000A1-HE	48V	20A	Universal	96%	Vertical	-40 to +65°C
V1500A1-HE	48V	30A	High Line	96%	Vertical	-40 to +65°C
V2000A1-HE	48V	40A	High Line	96%	Vertical	-40 to +65°C