

## Eltek Cooling Box

### Type C2E

Eltek is a world leader in the development of telecom power systems / solutions that are designed to meet the rapid growth within the field of telecommunication, as well as the increasingly stringent reliability requirements. A key to this reliability in the outside plant is creating a cool, dry and secure environment for the electronics. The Eltek Cooling Box incorporates an optimized thermal system controller and a high efficient Fan and Filter Solution that will keep even the most sensitive electronics functioning.



# ELTEK COOLING BOX

## TYPE C2E

Doc 2146621 – rev3

### PRODUCT DESCRIPTION

Eltek's cooling box (ECB) is a cost effective and power saving solution for cooling and OPEX saving initiatives for the modernization of Telecom Shelters.

The ECB has the advantage that a large amount of ambient air can be filtered / exchanged, giving very high cooling performance with low power consumption while maintaining the internal environmental temperature, dust and humidity.

The ECB when used with Eltek's SmartPack Controller technology enables a total shelter environmental control including any installed box, split type or Inverter type Air conditioner.

### APPLICATIONS

- Telecom BTS 2G,3G,4G (LTE) Shelter
  - Repeater Station
  - Wimax
  - Broadband
- GSMR
- Industrial

### KEY FEATURES

- GALVANISED STEEL CONSTRUCTION
- LOW COST SINGLE BOX SOLUTION FOR ALL TYPES OF SITES.
  - New sites, Modernization of existing sites
- LIGHT WEIGHT AND EASY TO INSTALL.
- UNIQUE FAN SPEED DESIGN
  - Full speed control 0 to 100%
- MAXIMIZE FAN LIFE WITH REDUCE MAINTENANCE COSTS.
- DELTA  $\Delta T$  TRACKING.
  - Internal temperature probe, External temperature probe and-Humidity sensor (optional)
- HORIZONTAL MOUNTING AIR FLOW
- DATA LOGGING USING ELTEK SMARTPACK CONTROLLER
  - Temperature logging: Indoor, Outdoor, Fan speed and Event Logger (ACU Run Time)
- EVENT & DATA LOGGER FILES RETRIEVABLE BY USING SD CARD
- ALARMS: FAN FAIL, HIGH TEMP, MCB TRIP, FILTER BLOCK (OPTIONAL), SYSTEM SHUTDOWN (FIRE CONTROL - OPTIONAL)
- ABLE TO CONTROL EXISTING AIRCON SYSTEM (MAX 2)
- COMPLETE SITE OVERVIEW
  - locally and remotely with Multi-Site Monitoring (Web Power , LAN connection)
- ONE CONTROLLER FOR ALL SITE FUNCTIONS
  - Basic control - I/O Monitor Type 3
  - Advanced control – Smartpack 1 or 2 + I/O Monitor Type 3

# ELTEK COOLING BOX

## TYPE C2E



### INPUT DATA

Air Flow	2500 m <sup>3</sup> /h
Power (Avg)	187 W (with zero pressure drop)
Cooling Capacity ( $\Delta T=2.5^{\circ}\text{C}$ )	1.75 KW Heat Load
( $\Delta T=5^{\circ}\text{C}$ )	3.50 KW Heat Load
( $\Delta T=10^{\circ}\text{C}$ )	7.00 KW Heat Load
DC Current (Max)	5.2 A
DC Input	36-57 V
Fan	<ul style="list-style-type: none"> <li>backward curved blades offering an extreme aerodynamic airflow efficiency</li> <li>Impeller: aluminum sheet, laser-welded Rotor: coated in black</li> <li>control input 0-10 VDC / PWM</li> <li>tach output</li> <li>over-temperature protected motor</li> <li>polarity and locked-rotor protection, rotation is CW.</li> </ul>
CF Filter Series (Std)	G4: 1.1 m <sup>2</sup> [EN779] at Max 200PA and 2600m <sup>3</sup> /h
EF Filter series (washable filter options)	G4: 1.0 m <sup>2</sup> [EN779] at Max 250PA and 2500 m <sup>3</sup> /h
Operating temperature	-20 to +65 °C
Operating Humidity	RH 0-95%
Weight	Approximately 22 kg

### CONTROLLER SPECIFICATIONS

Basic Control	Standalone - I/O Monitor Type 3
Dual Control	1 Controller can control 2 ECB Fans
Advanced Control	Smartpack 1, 2 + I/O Monitor Type 3
Alarms	<ul style="list-style-type: none"> <li>Relay Alarming N/O – N/C</li> <li>Configurable Inputs / Outputs</li> <li>Climate Control</li> <li>Filter Clog (optional)</li> <li>System Shutdown (Fire Control - optional)</li> </ul>
Event Log	<ul style="list-style-type: none"> <li>Alarm Log</li> <li>ECB On/Off</li> <li>ACU On/Off</li> </ul>
Data Logging SP1 or SP2 Integrated (See configuration)	<ul style="list-style-type: none"> <li>Temperature (Indoor, Outdoor)</li> <li>Fan Speed</li> <li>Fan Deviation</li> </ul>

### CONSTRUCTION SPECIFICATIONS

ECB	Galvanised Steel
Filter Change	Removable access panel for fast filter change
Filter Detection	Optional: sends an alarm when filter gets clogged
Fire Alarm Relay	Optional: receives alarm signal from external input and deactivate the fan
Security	Minimum intrusion risk with no external exposed fixings or access
Exhaust Damper Outlet (std)	99.9% reliable pressure damper with internal & external bug traps

### PHYSICAL SPECIFICATIONS

ECB	H x W x D: 400 x 502 x 490 (mm) <b>Note:</b> when mounting the ECB, the wall thickness should not be more than 100mm.
Standard Exhaust Damper with Rain Cover	H x W x D: 370 x 400 x 310 (mm)
Optimised Exhaust Damper Rain Cover	H x W x D: 540 x 550 x 270 (mm)
Temperature Probe Cable Lengths	5 Meters

### DESIGN STANDARDS

Electrical Safety	EN 60950-1 : 2006 + A11:2009 + A1:2010 + A12:2011
EMC	ETSI EN 300 386 V1.5.1 : 2010 EN 61000-6-1 : 2007, EN 61000-6-2 : 2005, EN 61000-6-3 : 2007 + A1:2011, EN 61000-6-4 : 2007 + A1:2011
Environment	RoHS and WEEE compliants

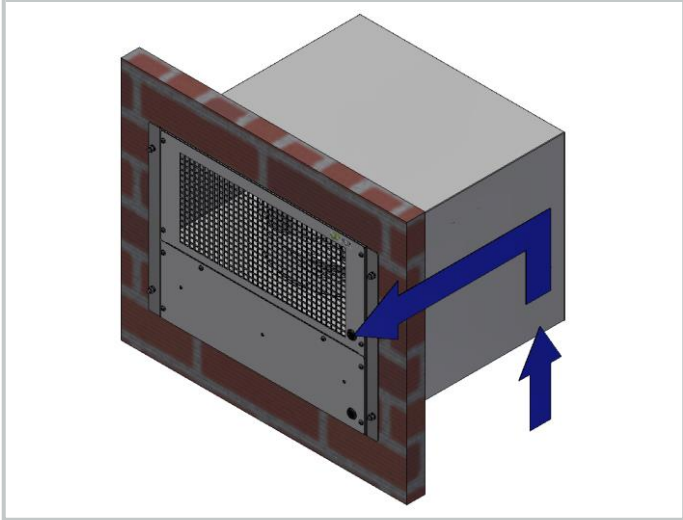
Specifications are subject to change without notice

# ELTEK COOLING BOX

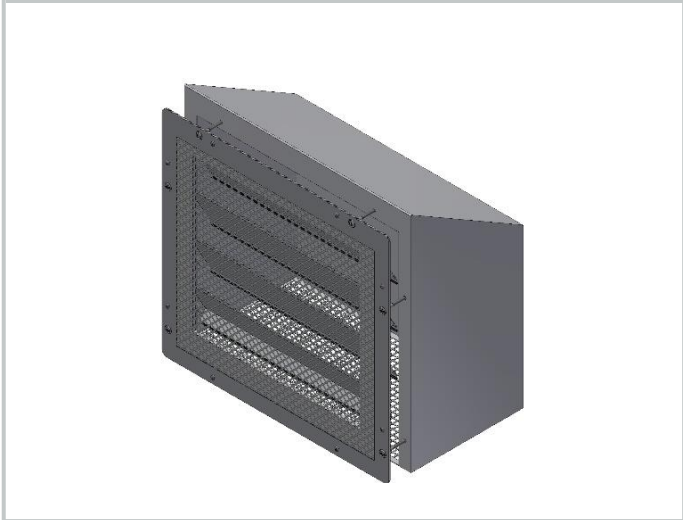
## TYPE C2E



ELTEK COOLING BOX TYPE C2E MOUNTING



OPTIMISED EXHAUST DAMPER WITH RAIN COVER



Configuration	IFS Part Number (48VDC)	IFS Description
Fan & ACU mode Standalone ECB with control box & SP2 as display (with Filter Block Detector) (Note: includes CAN Power) - G4 CF Filter	ECB0104.106	Eltek Cooling Box Type C2E_106
Fan & ACU mode Standalone ECB with control box & SP2 as display (Note: includes CAN Power) - G4 CF Filter	ECB0104.006	Eltek Cooling Box Type C2E_006
Consumables		
Part Number (Filter Options)	<div><div>○ 287628</div><div>○ 290201</div></div>	<div>G4 Filter 495 x 455 x 45 CF</div> <div>G4 Filter 495 x 455x 48 EF</div>

Specifications are subject to change without notice